

**RIVOLTA
PONTEGGI**

**Since 1987,
reaching new heights
with confidence**

CONTENTS

1_ OUR COMPANY

About us

Our team

Our locations

2_ OUR ACTIVITIES

Areas of expertise

Churches

Industrial maintenance

Viaducts

Public contracts

Conservative restoration

Apartment building

Special solutions

Temporary covering

3_ CONTACTS



**OUR
COMPANY**





ABOUT US

Since 1987, we have specialized in assembly, disassembly, and rental of scaffolding.

Each day, we ensure efficient service based on organization and quality, as only those who engage in this work daily truly understand it. Our expertise has been built through experience, enabling us to navigate the variables and overcome obstacles encountered nearly every day in our profession.

OUR TEAM

Our team of **qualified technicians** is able to offer both professionals and individuals comprehensive consultation and specialized assistance for resolving all issues related to **scaffolding installation**.



OUR LOCATIONS



Our historical headquarters

Via Circonvallazione 17
28060 Comignano (NO)
tel. 0322 50288



Valle d'Aosta location

Via Aosta (SS 26)
11023 Chambave (AO)
tel. 0166 46412

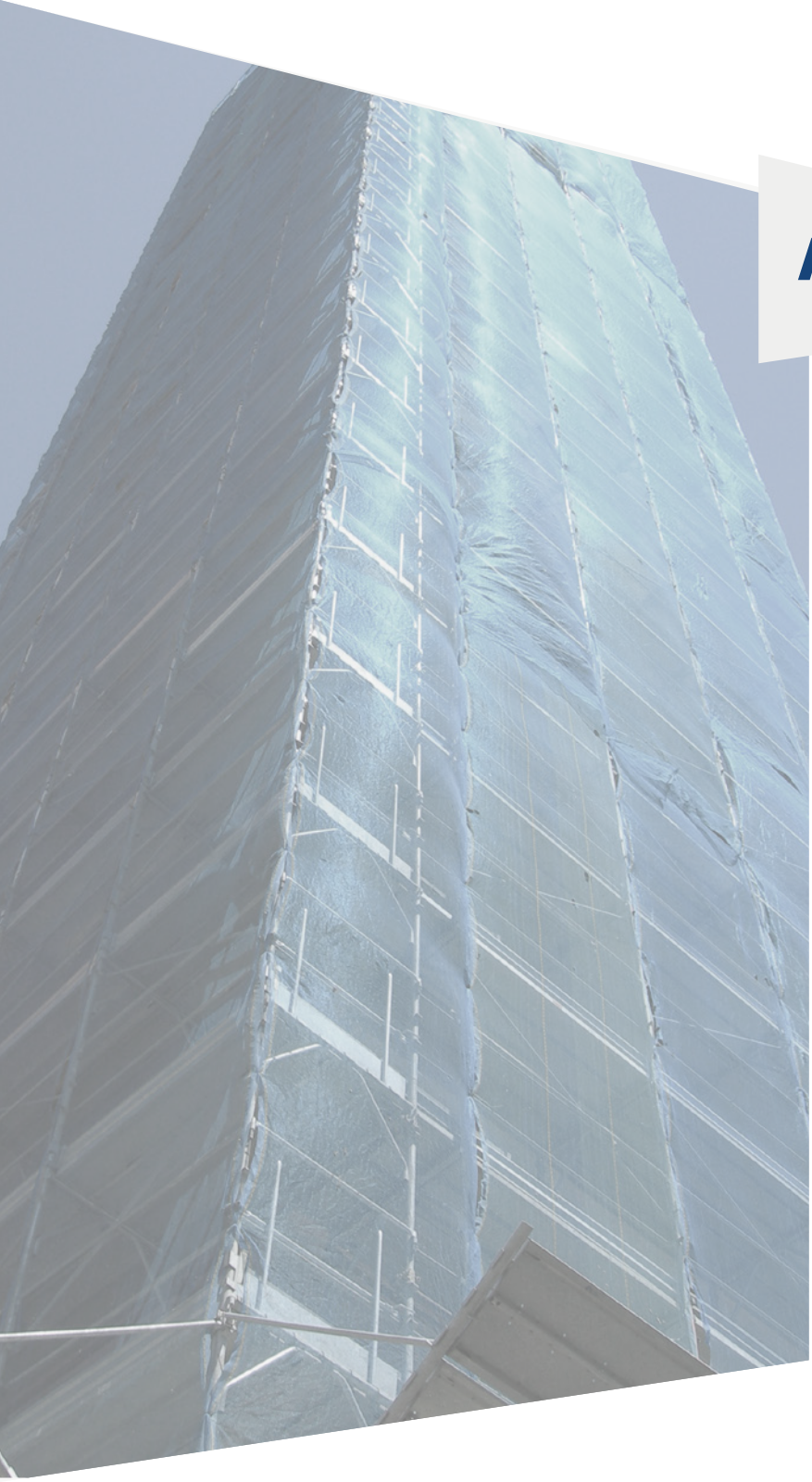


Logistic hub

Strada Moletto 11
3048 Santhià (VC)
tel. 0161 931014



**OUR
ACTIVITIES**



AREAS OF EXPERTISE



CHURCHES



**INDUSTRIAL
MAINTENANCE**



VIADUCTS



PUBLIC CONTRACTS



**CONSERVATIVE
RESTORATION**



**APARTMENT
BUILDING**



**SPECIAL
SOLUTIONS**

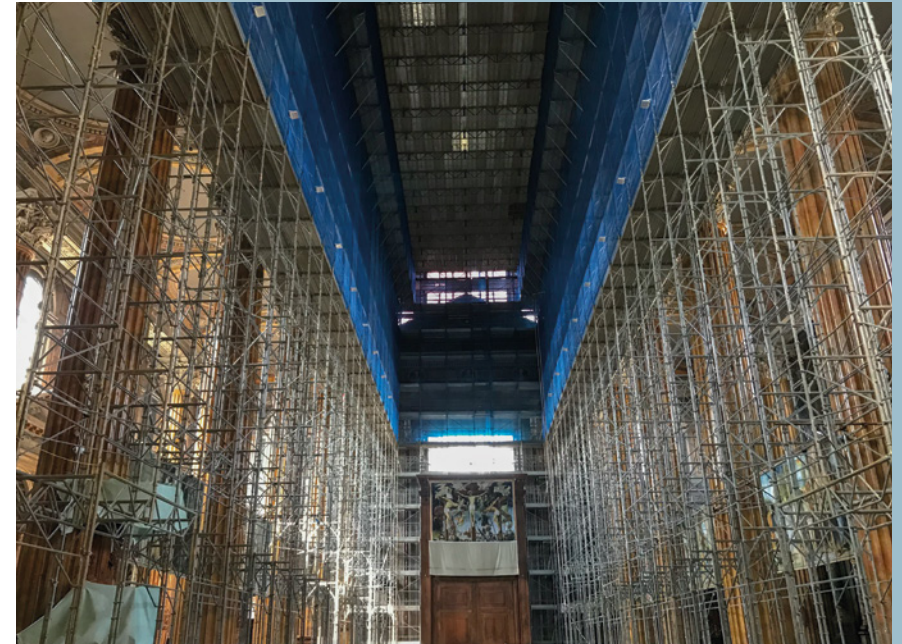


**TEMPORARY
COVERING**



CHURCHES

We have established numerous partnerships with curias and dioceses for religious buildings, encompassing both the Cathedral in the historic center and the parish of the suburban oratory. These entities entrust us because we understand the necessary precautions when **erecting scaffolding within a religious structure**, effectively plan the tasks in advance, and provide invaluable guidance to ensure the successful completion of scaffolding projects.



Duomo di Novara



The bell tower of Malnate (VA)



The bell tower of the Novara Cathedral



The Parish of San Michele in Cantù (CO)



The bell tower of Carpignano Sesia (NO)



The Verbania Cathedral



The Church of Noga, Villadossola (VB)



INDUSTRIAL MAINTENANCE



Tamoil Tank, San Martino di Trecate (NO)

Scaffolding for industrial maintenance is designed to restore its functionality, to requalify an area, to modernize its technological efficiencies, or simply or simply undergo extensive building maintenance; they are unique due to their assembly, and the speed at which they can be deployed precisely because they cover large areas.

No construction site is ever the same, because with our thirty years of experience in the field, we know that every maintenance job has its own story. They are all different works, each in different contexts, and only those with extensive experience in their field always know how to advise and navigate within certain situations.



ABB spa, Electric generator maintenance



Edipower Power plant, Turbigo (MI)



Former Olivetti Headquarters, New Vodafone Offices, Ivrea (TO)



Cogne Steelworks, Aosta



VIADUCTS

Scaffolding for bridges and viaducts is designed to meet the specific needs of these structures. They provide sturdy and stable work platforms, essential for carrying out inspection, maintenance, repair, or construction work, ensuring safe access even to hard-to-reach areas. **Our scaffolding stands out for its flexibility and adaptability** to any type of surface and requirement. Rivolta Ponteggi offers tailor-made, high-quality solutions backed by years of experience in the industry. Trust us to provide safe, robust scaffolding that complies with the strictest safety regulations, ensuring excellent results and peace of mind throughout the project.



Sesia Bridge, Quarona (VC)



Railway Bridge, S.S. 54 Sarre (AO)



Bumaz Viaduct, S.S. 27 Km 11+618 (AO)



Borgo San Lorenzo, S.S. 32 (FI)



Hospital Bridge, Beaureguard (AO)



S.R.10, Pontey (AO)



Construction site SR 15, Brissogne (AO)



Varese Town Hall

PUBLIC CONTRACTS

They are designed for tasks such as improving technological efficiencies, increasing thermal insulation, refurbishing roofing, or carrying out extraordinary maintenance; except in cases of emergency, maintenance work on these buildings is typically scheduled during **long closures to ensure user safety and avoid work delays. Scaffolding requires precise interventions:** materials must be stored in designated areas, the work area must be delineated, and safe access points for operators and building occupants must be created. Furthermore, public buildings often hold historical significance, featuring architectural elements such as overhangs and pilasters. These require meticulous consideration during the estimation, design, and assembly phases.



Institute IPSAR of Trino Vercellese (VC)



Occhieppo Town Hall (BI)



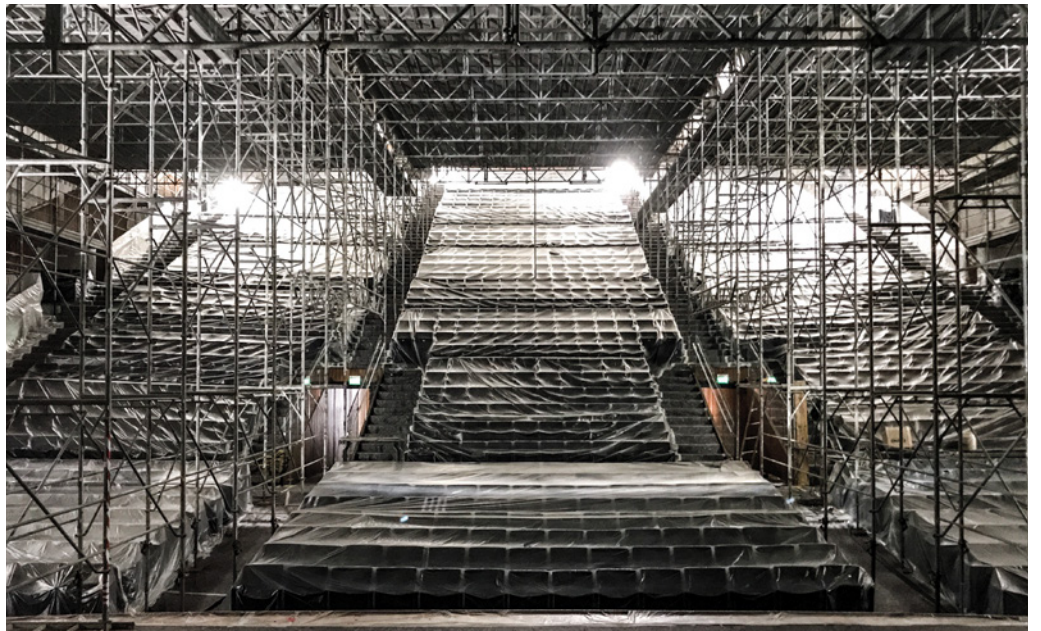
State Middle School of Albissola (SV)



Strambino Town Hall (TO)



Istituto Tecnico Geometri of Aosta



Auditorium Giuseppe Rossi, Milan Conservatory



CONSERVATIVE RESTORATION

These activities focus on preserving and restoring buildings, maintaining their functionality through actions like restoring and renewing their core elements, installing new systems and accessories, and adjusting their use without changing their structure or layout. We have been involved in **numerous projects of significant historical, religious, and cultural importance, including UNESCO World Heritage sites.**

We excel in these types of projects, providing punctuality, reliability, precision, and expertise to our clients.



Seminario Arcivescovile di Milano - Venegono Inferiore (VA)



The Bicocca degli Arcimboldi, Milano



Piazza Montegrappa, Varese



Saint Pierre Castle (AO)



Basilica of San Vittore Martire (VB)



Coccia Theater of Novara



APARTMENT BUILDING



Via Adamello, Novara

The renovation works of **large residential complexes demand precise coordination among various professionals and companies on-site**. Often, scaffolding installations must occur in multiple stages, employing shifting techniques to minimize disruptions to the condominium. Additionally, beams or driveways are used to prevent scaffolding assembly from obstructing access to the condominium and parking areas. Billing procedures for tax deductions, as per current regulations on private housing renovation, are prepared in collaboration with the Administrator of the apartment building.



Einaudi building, Livorno Ferraris (VC)



Palestro building, Como



Palazzo delle Statue, Novara



Tadini building, Arona (NO)



Chambery Building, Aosta



SPECIAL SOLUTIONS

Our special solutions are accessories designed to facilitate operations on certain types of construction sites. Here's what we offer:

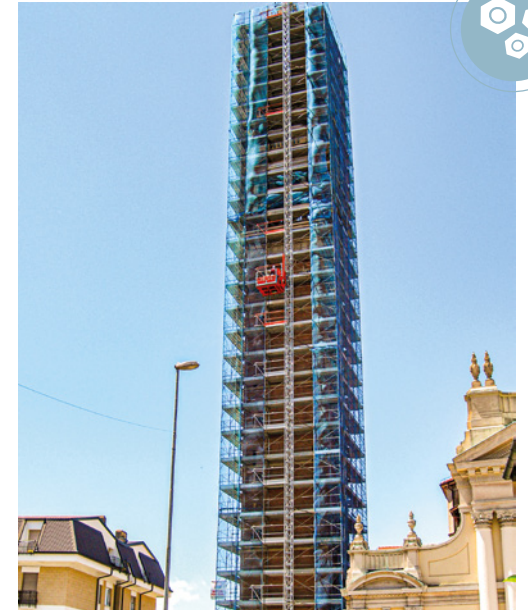
- **Alimak industrial elevator**, with a capacity of 1000 kg, they allow for rapid access to higher levels and are directly mounted on the scaffolding frames;
- **Multidirectional scaffold staircase** for construction or public use, facilitating and expediting the movement of materials and workers across each level;
- **Structures for installing advertising banners**, which, by applying a frame on a facade scaffold, can accommodate any type of large-format digital print;
- **Customized setups** tailored to your needs.



Advertising Structure, Champoluc (AO)



Advertising Structure, Gressoney (AO)



Malnate Bell Tower (Va)
Alimak elevator



Advertising Structure in Corso Venezia, Milano



Temporary Multidirectional Staircase



Advertising Structure in Via Manin, Milano



TEMPORARY COVERING

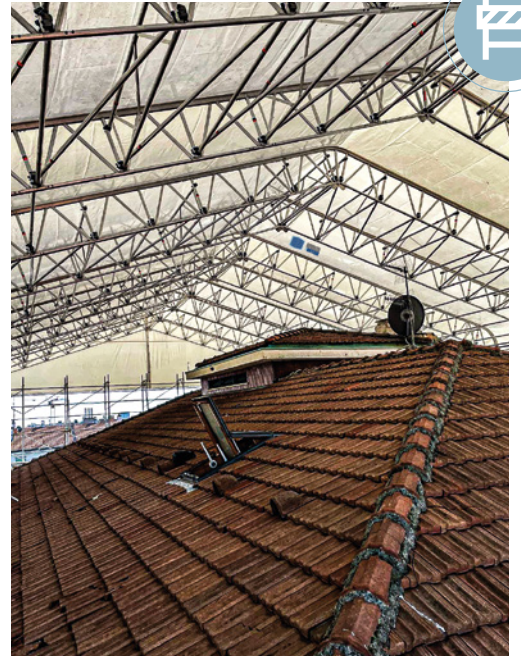


Bertolino Farm, Novara

Temporary coverings are constructed using prefabricated aluminum beams and PVC sheets, which can slide within tracks. This unique feature allows for covering large areas without adding excessive weight to the structure. These coverings are essential for projects involving the elevation of a building or the conversion of an uninhabitable attic, especially when other tenants occupy the lower floors. They seamlessly integrate with our scaffolding systems and can be quickly uncovered, either partially or entirely, to facilitate crane access for material handling. At the end of the day, they can be closed to protect the building from the elements.



Temporary Covering in Via Crispi, Varese



Corso Venezia, Milano



Via Rosa Vergani Marelli, Milano



Piazza Montale, Torino

CONTACTS

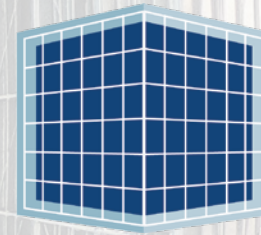
From Monday to Friday
9:00/12.30 – 14.30/19.00

info@rivoltaponteggi.com
rivoltaponteggisrl@pec.it

rivoltaponteggi.com



THANK YOU



**RIVOLTA
PONTEGGI**

**Since 1987,
reaching new heights
with confidence**